

# FlexStorm<sup>®</sup> Full Trash Capture Inlet Filter

---

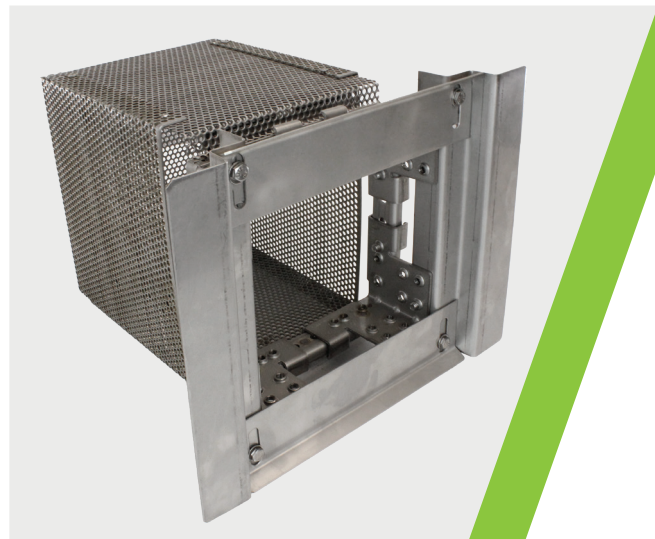
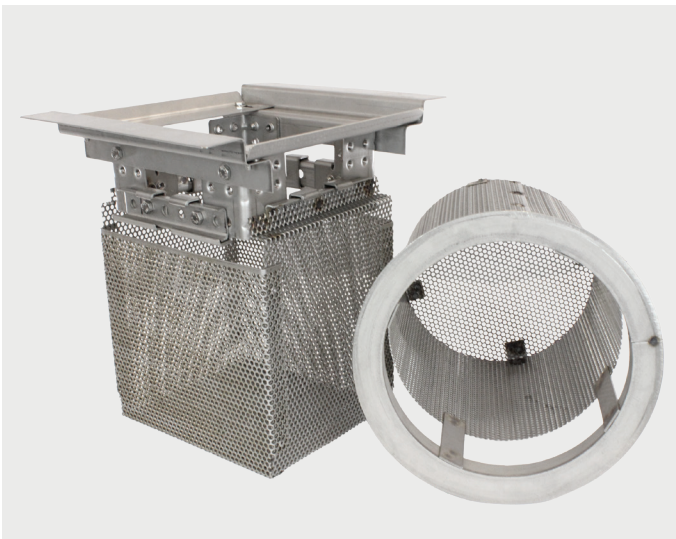
FlexStorm Full Trash Capture (FTC) inlet filters are perfect for protecting drainage systems from trash. Useful for new construction and retrofit, FTC filters are custom designed to fit any catch basin. The basket stores trash in a manner and location that is easy to collect and empty, while preventing trash from infiltrating the stormwater system.

## Features

- Frame constructed of 304 stainless steel for maximum structural integrity
- Large volume to store trash and debris
- Keeps all particles larger than 0.197" (5 mm) out of the catch basin
- Optional Vector Control modifications available
- Overflow bypass exceeds basin flow rating

## Benefits

- Good for retrofits, new applications or city-wide installs
- Configured to fit any storm drainage structure
- Drop-in design ensures easy maintenance and inspection
- Shipped assembled - just drop it in!
- Approved by California Water Board



# FlexStorm Full Trash Capture Inlet Filter Specification

## Installation

1. Remove the grate from the inlet.
2. Clean debris from the ledges of the inlet.
3. Place the FTC filter onto the load-bearing ledges of the structure.
4. Replace the grate and confirm it is not elevated more than 1/8" (3 mm).

## Frequency of Inspections

Inspection should occur every three months and following rain events greater than 1/2" (13 mm). Sites with greater Total Maximal Daily Loads (TMDLs) may need more frequent inspection.

## Maintenance Guidelines

1. Remove grate and empty filter basket manually or via industrial vacuum.
2. Remove compacted silt and organics from the basket and flush with medium spray.
3. Inspect basket for blinding of the perforated sheet and bypass before reinstallation and replacing grate.

## Vector Control

Full Trash Capture units have an optional vector control modification. This consists of a hinged lid to allow workers to view and drop anti-mosquito pesticides into a catch basin without a confined space entry.

## Product Selection

Please see the table below with details on size ranges for FTC baskets. Standard sizes are offered for 18" (450 mm), 24" (600 mm), 36" x 18" (900 x 450 mm) and 36" x 24" (900 x 600 mm) concrete catch basins with custom pieces for other sizes.

## Size Ranges Offered

Filter Style/Size	Small	Medium	Large	Extra Large
Round (diameter)	12"-16" (300-400 mm)	<24" (600 mm)	<36" (900 mm)	N/A
Square (perimeter)	<64" (1,625 mm)	<96" (2,440 mm)	<120" (3,050 mm)	>120" (3,050 mm)
Wall Mounted (curb opening)	1'-4' (0.3-1.2 m)	4'-8' (1.2-2.4 m)	8'-12' (2.4-3.6 m)	12'-16' (3.6-4.8 m)

## Build America, Buy America (BABA)

For any questions related to Build America, Buy America (BABA) Act compliance contact an ADS representative.

