

Ground Protection Mats

ADS® BAM! Ground Protection Mat - Versatile, Safe and Durable Site Protection to Save You Time and Money



Features & Benefits



Exclusive dual side traction design



Interlocking tread designs



Available in two sizes



Cost-effective compared to plywood



Light: 4' x 8' sheet weighs 56 pounds



Test rated at 53,712 pounds per sq. foot



Doesn't absorb sunlight, prevents turf browning

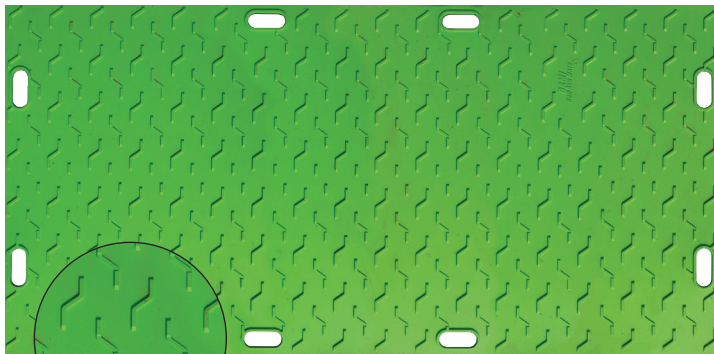


Resists cutting and fading



adspipe.com
800-821-6710

BAM! Ground Protection Mats



BAM! Equipment Side



BAM! Pedestrian Side

Advantages of using BAM! mats:

- Mitigates unnecessary site damage
- Re-usable - weight, color and shape remain consistent over mat's lifetime
- 4' x 8' (1.2 x 2.4 m) sheet weighs only 56 pounds (25 kg) and rated at 160,000 pounds (72,574 kg)*
- Hand holes on the 4' x 8' (1.2 x 2.4 m) for easy loading and unloading
- 3/8" (9 mm) thickness vs. competitor's 1/2" (13 mm) sheet, which weighs 90 pounds (40 kg)
- Won't absorb chemicals and moisture. Rinse with soap water and re-use
- Manufactured in the USA with a 3-year manufacturer's limited warranty

* Rating subject to ground conditions



adspipe.com
800-821-6710