

Inserta Tee® OneFit™

Lateral Solution

One lateral solution that will fit any type of pipe.

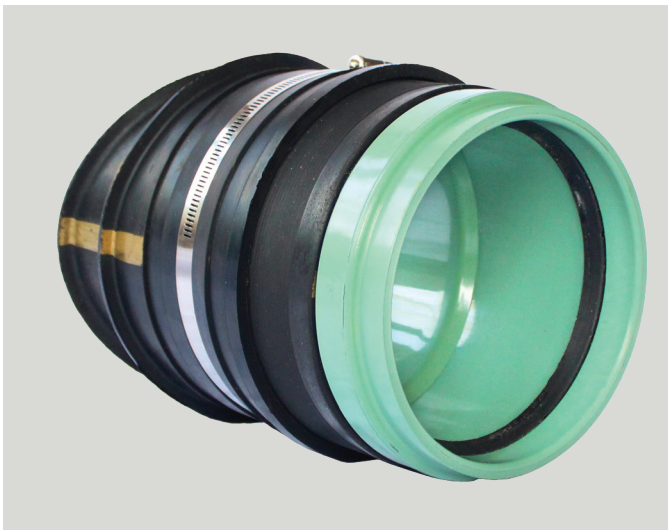
- **Same great performance**
 - reliable, a fitting you can count on
- **Saves time**
 - fast and efficient installation
- **Saves money**
 - lower material and labor costs

Applications

- Roof drain leaders
- Structures
- Retention/Detention
- Storm sewers
- Irrigation/Agriculture
- Nyloplast® Drain Basins
- All pipe types
- Municipal repair/rehab
- Fiberglass manholes
- Rainwater harvesting



Click on the QR code to view an Inserta Tee installation video.



How to install the Inserta Tee OneFit



Core a hole perpendicular to the host pipe using the recommended hole saw. Remove the coupon from the saw. Deburr the cored hole.



Use the coupon to estimate the separation between the two sleeves and fit the two sleeves together. Be sure the gold lines on the sleeves are lined up.



Insert the rubber sleeves into the cored hole, with the gold lines perpendicular to the pipe. Once in place, pull up on the inner sleeve and push down on the outer sleeve until fitted to the host pipe.



Apply soap solution to inside of the inner sleeve and on the PVC hub. Insert the PVC hub into the sleeve by hand until snug fit, aligning the red line on the hub with the gold lines on the rubber sleeves.



Drive the plastic hub into the rubber sleeves with a 4 pound mallet and block of wood. Stop when the rubber sleeve meets the red line.



Place and tighten stainless steel band.

Build America, Buy America (BABA)

ADS Inserta Tee lateral connection, manufactured in accordance with ASTM F477, complies with the requirements in the Build America, Buy America (BABA) Act.

